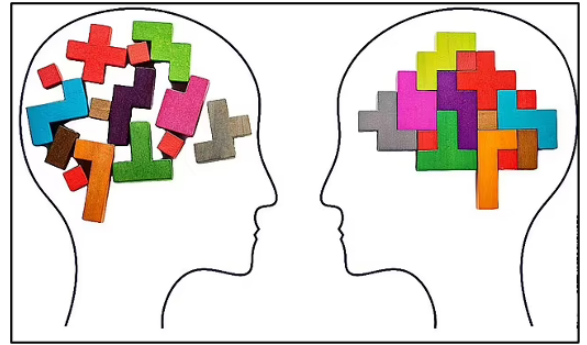


ATTENTION DEFICIT HYPERACTIVITY DISORDER DIAGNOSTIC ASSESSMENT

WHAT IS ADHD?

Attention Deficit Hyperactivity Disorder (ADHD) is a neurodevelopmental condition (affecting the brains functioning) that often first appears in childhood and lasts into adulthood. It can affect a child's behaviour, learning, social, and emotional wellbeing. Children with ADHD can find it difficult to pay attention. They may also find it difficult to control their impulses and therefore can act without thinking about the possible consequences or be overly active.



WHAT ARE THE SIGNS?

ADHD can be misunderstood. It can cause problems in several areas including at school, friendships, work, and family life.

Children with ADHD experience difficulties with:

- inattention – having difficulty concentrating, forgetting instructions, moving from one task to another without completing anything.
- impulsivity – such as talking over the top of others, having a 'short fuse', being accident prone.
- overactivity – constant restlessness and fidgeting.
- emotional regulation
- social navigation and friendships
- sleep

All young children have a limited attention span and sometimes do things without thinking, but only a few of these children have ADHD. With understanding, care and medical treatment, people with ADHD can be successfully supported to overcome these difficulties.

WHAT CAUSES ADHD?

The exact cause of ADHD is not known. ADHD is not a sign of low intelligence. ADHD is not the child's or the parents' fault. Contributing factors affecting brain development include genetics, environment, and life experiences.

THE ASSESSMENT PROCESS

There is no single test for ADHD. A specialist can only diagnose ADHD after making a detailed assessment, which involves collecting a range of information about your child from multiple sources including parents and teachers.

For ADHD to be diagnosed, the symptoms of ADHD must be obvious in most areas of a child's life.

The assessment includes both behavioural and performance measures of attention and executive functioning that provide understanding regarding an individual's degree of attentional and behavioural control, as well as their planning and organisation skills.

A cognitive assessment is used to ascertain possible co-occurring conditions such as language or intellectual delay, and to identify required learning supports and inform classroom strategies.

The total assessment package costs \$2200 and includes:

- Interviews with parent/s, teacher, and child
- Observation and formal assessment within the clinic setting
- Questionnaires completed by parents and teacher
- Comprehensive feedback and report with recommendations

STANDARD ASSESSMENTS USED:

- Connors 4th Edition (Conners-4)
- Behaviour Rating Inventory of Executive Functioning – Second Edition (BRIEF-2)
- Wechsler Preschool and Primary Scale of Intelligence – Fourth Edition (WPPSI-IV) or
- Wechsler Intelligence Scale for Children – Fifth Edition (WISC-V)
- Child Behaviour Checklist (CBCL) or Behaviour Assessment System for Children 3rd Edition (BASC-3)

THINGS TO CONSIDER

The assessment conducted at GLOW will be comprehensive and objective in determining whether your child's behaviour and overall presentation meets criteria for a diagnosis of Attention Deficit Hyperactivity Disorder.

In some cases, an assessment may reveal that a child's behaviour and difficulties are reflective of ADHD, and in other instances a diagnosis of ADHD may not be appropriate. The reasons for the outcome of the assessment will be discussed with you in full during the feedback session.

REBATES FOR ASSESSMENTS

- NDIS, if already registered
- Private health insurance (contact your insurer for more information)

HOW TO BOOK AN APPOINTMENT

Please ensure you have a valid referral from the Paediatrician or Child Psychiatrist

Call our reception team at GLOW Clinic on 9769-5606 to book your child's ADHD assessment.

Dr Penelope Polioudakis is a Clinical Child Psychologist with a Doctorate in Clinical Psychology.

Penelope has extensive experience in assessing and treating preschool and primary school aged children with a range of emotional, social and behavioural difficulties, including conducting cognitive and educational assessments.



Suite 1, Stephenson House,
8 – 14 Gibb St Berwick VIC 3806

Parking and entrance at rear of
building.

Ph 9769 5606
Fax 9769 5821

reception@glowclinic.com.au

glowclinic.com.au



Prices correct as of August 2024

We pride ourselves in providing a transparent, ethical and professional service to families.

Contact us for further information relevant to your child's individual circumstances.